

High performance, 3G SDI ready projector with dynamic feature set and broadcast capability delivers an entirely new viewing experience.



## Key Features

- WUXGA 1920 x 1200 resolution
- 13,000 ANSI lumens brightness
- Dual lamp system
- 3 chip DLP technology
- HDMI 2 inputs
- 3G SDI enabled
- 3D availability with stereo DVI
- Edge blending
- Geometric correction
- High performance filter

**1.800.HITACHI**  
**dmd.info@hal.hitachi.com**  
**hitachi-america.us/projectors**



As part of Hitachi's Professional Series, the CP-WU13K DLP® projector is a true achievement in graphics display technology and performance. Offering the most advanced functionality with flexible installation features, Hitachi's CP-WU13K is a perfect choice for large auditoriums, conference rooms, museums, and concert or stage productions. The CP-WU13K is equipped with a dual lamp system, which achieves brightness of 13,000 lumens, provides multi-projection capability, incorporates 4 digital inputs including 3G SDI for added versatility and broadcast capability, plus a high performance filter reducing dust sticking to critical components. For even greater image quality, the CP-WU13K features 3 chip DLP technology. Each chip is actually divided by a light prism into each of the three primary color chips instead of the light being directed into one unique chip. The light is then redirected and combined through the projector lens as the image. For added peace of mind, Hitachi's CP-WU13K is also backed by a generous 3-year warranty and our world-class service and support programs.

# CP-WU13K



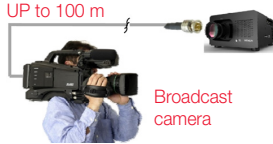
## UNIQUE FEATURES

### Advanced Installability and System Features

Projectors feed 4 digital inputs including 3G SDI.



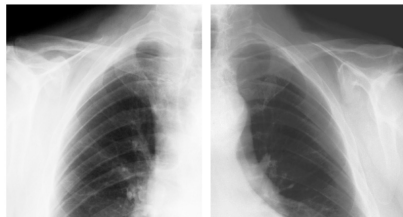
**3G SDI** Equipped with standard SDI in the broadcast industry. 3G SDI can transfer 1080P signal via coaxial cable.



### DICOM® Simulation Mode

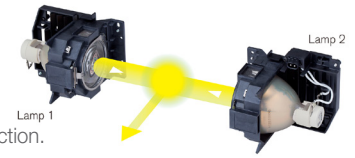
The DICOM (Digital Imaging and Communications in Medicine) Simulation Mode projects grayscale images which approximate DICOM Part 14 specifications. This mode is ideal for viewing grayscale medical images, such as X-rays, for training and educational purposes.

The projectors have a DICOM (Digital Imaging and Communications in Medicine) Simulation Mode. This mode simulates the DICOM standard, which is a standard applicable to digital communications in medicine, and is useful for displaying medical images such as X-rays. These projectors are not medical devices and are not compliant with the DICOM standard, and neither the projector nor the DICOM Simulation Mode should be used for medical diagnosis. Comparison photos are simulations.



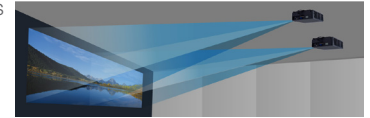
### Dual Lamp

Equipped with the highly reliable Dual Lamp System. If one lamp stops functioning during use, the second lamp activates and projects the image with no interruption in the projection.



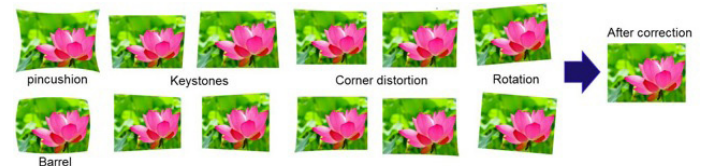
### Edge Blending

Projectors are equipped with the Edge Blending function that achieves the seamless projection of one image using multiple projectors. Easily performs blending processing with brightness adjustment by lamp power mode. (Edge blending does not work with DVI input.)



### Geometric Correction

The Geometric Correction function allows images to display on an uneven surface. (Does not work with the DVI input.)



### Variety of Interchangeable Lenses

Six lenses are available to match various screen sizes and installation environments. Projection is possible in diverse installation areas from small conference rooms to auditoriums, convention halls and other large spaces.

Optional Lenses	Throw Ratio	Projection Distance	Projection distance for optical lens at 200" 16:10 screen.						
			40	30	20	10	0		
<b>FL-K01</b> Short throw lens Fixed Focus lens (4.5kg)	0.7	2.9m							
<b>FL-K02</b> Short throw lens Fixed Focus lens (5.8kg)	1.1	4.8m							
<b>SL-K03</b> Short throw zoom lens Zoom: x1.3 (6.1kg)	1.4~ 1.9	6.0~8.1m							
<b>ML-K04</b> Standard zoom lens Zoom: x1.3 (5.1kg)	1.9~ 2.6	8.1~11m							
<b>LL-K05</b> Long throw zoom lens Zoom: x1.6 (5.2kg)	2.6~ 4.2	11~18m							
<b>UL-K06</b> Ultra Long throw zoom lens Zoom: x1.6 (4.6kg)	4.2~ 7.0	18~30m							

H10272-Rev.3-11/16  
 All specifications subject to change without notice.  
 DLP® and the DLP logo are registered trademarks of Texas Instruments.  
 ©2016 Hitachi America, Ltd. All Rights Reserved.

### Hitachi America, Ltd.

Toll Free: 1.800.HITACHI • Email: [dmd.info@hal.hitachi.com](mailto:dmd.info@hal.hitachi.com)  
 Web: [hitachi-america.us/projectors](http://hitachi-america.us/projectors)





Front View



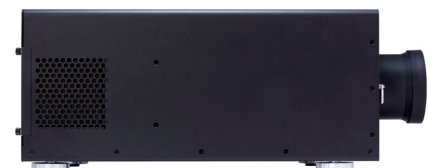
Rear



Top View



Left Profile



Right Profile

## STANDARD FEATURES

### Motorized Zoom, Focus and Lens Shift Control:

Allows for greater range of installation possibilities. With the motorized function you can make fine adjustments through the remote control or RS232/IP device. (FL-K01 and FL-K02 are fixed focus lenses and FL-K01 is not available for lens shift.)

**Multiple Lens Options:** 6 optional lenses are available: FL-K01, FL-K02, SL-K03, ML-K04, LL-K05, UL-K06.

**PIP Function:** This function allows for displaying picture in picture modes and picture by picture mode. There are 5 options for this feature.

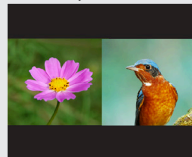
Top Left



Top Right



Split L-R



Bottom Left



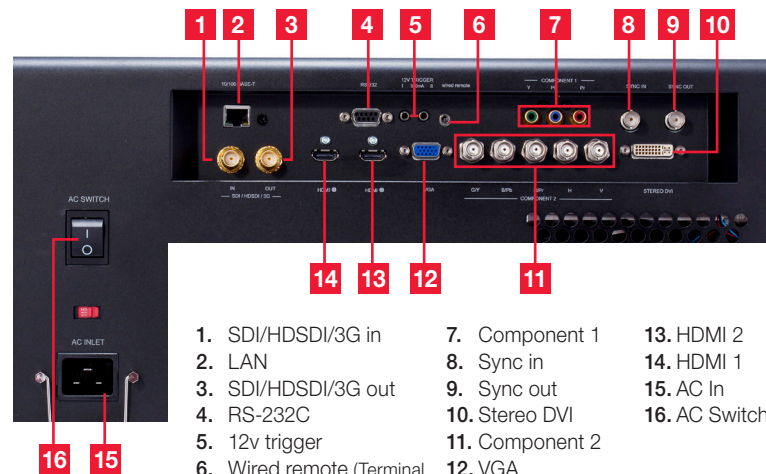
Bottom Right



### Wired and Wireless Switcher Solutions:

Multifunctional switcher operates in conjunction with the receiver to provide expanded source selection and switching options for connected devices. The switcher is sold as an optional accessory that can provide 1080p 30 fps wireless via WHDI.

## Input/Outputs



- |   |                 |               |
|---|-----------------|---------------|
| 1. SDI/HDSDI/3G in                                  | 7. Component 1  | 13. HDMI 2    |
| 2. LAN  | 8. Sync in      | 14. HDMI 1    |
| 3. SDI/HDSDI/3G out                                 | 9. Sync out     | 15. AC In     |
| 4. RS-232C  | 10. Stereo DVI  | 16. AC Switch |
| 5. 12v trigger                                      | 11. Component 2 |               |
| 6. Wired remote (Terminal for external IR receiver) | 12. VGA         |               |

HI0272-Rev.3-11/16  
All specifications subject to change without notice.  
DLP® and the DLP logo are registered trademarks of Texas Instruments.  
©2016 Hitachi America, Ltd. All Rights Reserved.





## Accessories and Lenses

<b>Supplied Accessories</b>	Remote control, power cord, RS232C cable (cross, male to male), user's manual, application CD
<b>Optional Accessories</b>	MS-1 wired and MS-1WL wireless multifunction switchers (switchers have limited function with this projector model)
<b>Optional Lenses</b>	6 optional lenses are available: FL-K01, FL-K02, SL-K03, ML-K04, LL-K05, UL-K06.
<b>Replacement Parts</b>	
<b>Lamp</b>	DT01591D
<b>Remote Control</b>	HL03051
<b>Filter</b>	MU08321 (for front), MU08331 (for rear)

## Projection Throw Chart

Screen Size	16:10 Throw Distance		
	Diagonal	Width	Min Max
100	85	159	217
120	102	190	260
150	127	238	325
200	170	317	434
250	212	397	542
300	254	476	651
350	297	555	759
400	339	635	868

Throw Ratio: 1.87 - 2.56 : 1 (distance : width)  
Screen size and throw distance are measured in inches with standard lens MLK04.

## Projection Lens Chart

Lens	Inches	Meters
<b>FL-K01</b>	113	2.9
<b>FL-K02</b>	190	4.8
<b>ML-K03</b>	235 - 317	6.0 - 8.1
<b>ML-K04</b>	317 - 434	8.1 - 11.0
<b>LL-K05</b>	434 - 706	11.0 - 17.9
<b>UL-K06</b>	706 - 1180	17.9 - 30.0

Projection distances measured in inches and meters with standard lens and optional lenses when projecting onto a 200" diagonal screen.

## Lens Shift

	FL-K01	FL-K02	SL-K03	ML-K04	LL-K05	LL-K06
Left Right	N/A	-10 ~ +10	-10 ~ +10	-10 ~ +10	-10 ~ +10	-10 ~ +10
Up Down	N/A	+50 ~ -25	+50 ~ -25	+50 ~ -25	+50 ~ -25	+50 ~ -25

## Specifications

Display	<b>Projection Technology</b>	Three chip DLP
	<b>Resolution</b>	WUXGA 1920 x 1200
	<b>Brightness</b>	13,000 ANSI lumens
	<b>Colors</b>	1.07 billion colors
	<b>Aspect Ratio</b>	Native 16:10; 16:9, 4:3, 5:4, 1.88, 2.35, letter box, unscaled compatible
	<b>Contrast Ratio</b>	2000 : 1
	<b>Throw Ratio</b> (distance : width)	1.87 - 2.56 : 1 (with ML-K04 lens, sold separately)
Lens & Operation	<b>Focus Distance</b>	159" - 868" (with ML-K04 lens, sold separately)
	<b>Display Size</b>	100" - 400" (with ML-K04 lens, sold separately)
	<b>Lens</b>	f = 39.0 - 53.4 mm (with ML-K04 lens, sold separately)
	<b>Lamp Wattage</b>	465W x 2
	<b>Expected Lamp Life*</b>	Approximately 2,000 hours (standard mode) 2,500 hours (Eco mode)
	<b>Expected Filter Life**</b>	Approximately 10,000 hours
	<b>Speaker Output</b>	N/A
Compatibility	<b>Keystone</b>	H: +/- 35° and V: +/- 20° (Note: Input signal is WUXGA @ 50Hz, Zoom position is Wide max. Does not work with DVI-D input.)
	<b>Computer</b>	VGA, SVGA, XGA, WXGA/WXGA+/SXGA/SXGA+/WSXGA+/UXGA/WUXGA (compressed), MAC 16"
	<b>H-Sync</b>	15.7 kHz ~ 91 kHz
	<b>V-Sync</b>	48 Hz ~ 85 Hz
	<b>Component Video</b>	480i, 480p, 576i, 720p, 1080i, 1080p
	<b>3D (DVI)</b>	1920 x 1080@120Hz, 1920 x 1080@100Hz, 1920 x 1080@60Hz, 1920 x 1200@120Hz, 1920 x 1200@100Hz, 1920 x 1080@60Hz
	<b>HDMI</b>	480i, 480p, 576i, 720p, 1080i, 1080p, Computer signal TMDS Clock 27 MHz - 150 MHz
Connectors	<b>3G SDI</b>	NTSC, PAL, 1035i, 1080i, 1080p, 720p, 1080sf
	<b>Digital Input</b>	HDMI x 2 (HDCP compliant), Stereo DVI x 1, SDI/HDSDI/3G BNC x 1
	<b>Computer Input 1</b>	15-pin mini D-sub x 1
	<b>Computer Input 2</b>	BNC x 5 (shared with component 2)
	<b>Digital Output</b>	SDI/HDSDI/3G BNC x 1
	<b>Video Input</b>	
	S-Video	N/A
	Composite Video	N/A
	Component Video	5BNC x 1 (shared with computer in 2), 3 RCA jack x 1, 15-pin mini D-sub x 1 (shared with computer in 1)
	<b>Audio Input</b>	N/A
	<b>Audio Output</b>	N/A
	<b>Network LAN Wired</b>	RJ-45 port (10 base-T / 100 base-TX)
	<b>Network LAN Wireless</b>	N/A
	<b>USB</b>	N/A
	<b>Wired Remote Control</b>	3.5 mm stereo mini jack (Terminal for external IR receiver)
<b>Control Terminals</b>	9-pin D-sub x 1 (RS-232 control), 3.5 mm mini jack x 2 (12V Trigger 1/2)	
Ratings & Warranty	<b>Power Supply</b>	AC100-130V / AC200-240V, 50/60Hz
	<b>Power Consumption</b>	1230W @110VAC/11.2A, 1250W @220VAC/5.3A
	<b>Operating Temperature</b>	32°F - 104°F (0°C - 40°C)
	<b>Dimensions (W x D x H)</b>	19.7" x 24.9" x 10.6" (500 x 633 x 270 mm) (excluding protruding parts)
	<b>Weight</b>	Approximately 74.97 lbs. (34 kg) (without lens)
	<b>Approvals</b>	UL60950-1/cUL, FCC Part 15 subpart B class A
	<b>Warranty</b>	3 year limited parts and labor Extended Service Contract available (additional cost)

\* Actual lamp life will vary by individual lamp and based on environmental conditions, selected operating mode, user settings and usage. Hours of average lamp life specified are not guaranteed and do not constitute part of the product or lamp warranty. Lamp brightness decreases over time.

\*\* Actual filter life will vary by individual filter and based on environmental conditions, selected operating mode, user settings and usage. Hours of average filter life specified are not guaranteed and do not constitute part of the product warranty.

HI0272-Rev.3-11/16

All specifications subject to change without notice.

3LCD and the 3LCD logo are registered trademarks of the Seiko Epson Corporation.

©2016 Hitachi America, Ltd. All Rights Reserved.

## Hitachi America, Ltd.

Toll Free: 1.800.HITACHI • Email: dmd.info@hal.hitachi.com

Web: hitachi-america.us/projectors



Trade-Up Program

HDMI OneVision



YouTube